





### **ABOUT OUR BEES**

Fenton is bringing two honey bee hives to promote biodiversity, support pollinators, and engage the community!



# 'THE HUM OF BEES IS THE VOICE OF THE GARDEN'

—ELIZABETH LAWRENCE





# ABOUT BUDDHA BEE

## Founded in 2019 by a former bee research tech

Justin Maness was a field research technician at Eurofins Agrosience Services. During his time there, he managed 500+ hives and helped conduct studies on the effects of pesticides on bees. He went on to manage hives for Burt's Bees, Precision Bioscience, and other companies. In 2019, he started Buddha Bee Apiary to bring the magic of beekeeping to more people in the community.

## Managing 150+ hives across 100+ locations

Our hives are located across backyards, businesses, and schools. We're committed to our deep roots in the Raleigh-Durham area. All of our host locations are within 1.5 hours of Cary.

## Locally-raised bees with a 98% survival rate

On average, 30% of honey bee colonies die across North Carolina every winter. Buddha Bee is committed to raising their bees locally, which means they are adapted to live in our specific micro climate. On average, 97% of Buddha Bee's colonies successfully overwinter.



# HANDS-ON EXPERIENCE

## DELIGHT YOUR TEAM WITH UNFORGETTABLE, HANDS-ON TOURS

Give your team a safe, once-in-a-lifetime experience. We'll get them suited up and show them the magical inner workings of our beehives. They'll learn how to find the queen, how bees make honey, why they sometimes "dance" inside the hive, and how Fenton's hives make a positive environmental impact.

**\$2,500 FOR 10 PARTICIPANTS**  
3 TOURS PER YEAR AVAILABLE

---

FENTON



BUDDHA BEE APIARY | 5



# CORPORATE GIFTS

## ENJOY RAW HONEY EXTRACTED FROM FENTON'S HIVES

Honey bees make for a busy team, working hand-in-hand (or antenna-in-antenna) to maximize efficiency and produce a stellar product. Sound familiar? From one dream team to another, give the gift of hyperlocal honey to your office and make any work day sticky sweet. Environmentally responsible as it is just plain delicious, honey from Buddha Bee Apiary is an A-plus.

### SUBJECT TO AVAILABILITY

50 4-OZ JARS \$500

100 4-OZ JARS \$700





# INDOOR CLASS

## LEARN HOW TO TASTE HONEY LIKE A SOMMELIER

In this class, attendees will enjoy the opportunity to hone their honey-tasting skills, just like a professional sommelier. By exploring the unique flavors of single-origin honeys, and delving into how flowers and terroir affect their sensory characteristics, participants will gain a comprehensive understanding of the art of honey tasting.

\$2,750 FOR 15 PARTICIPANTS  
5 CLASSES PER YEAR AVAILABLE





# INDOOR CLASS

## DISCOVER SOMETHING NEW WITH OUR KEYNOTES

Get your team excited about your bees with educational classes led by our expert beekeepers. These 45-minute classes are designed to transform the way your team sees bees and make them love where they work.

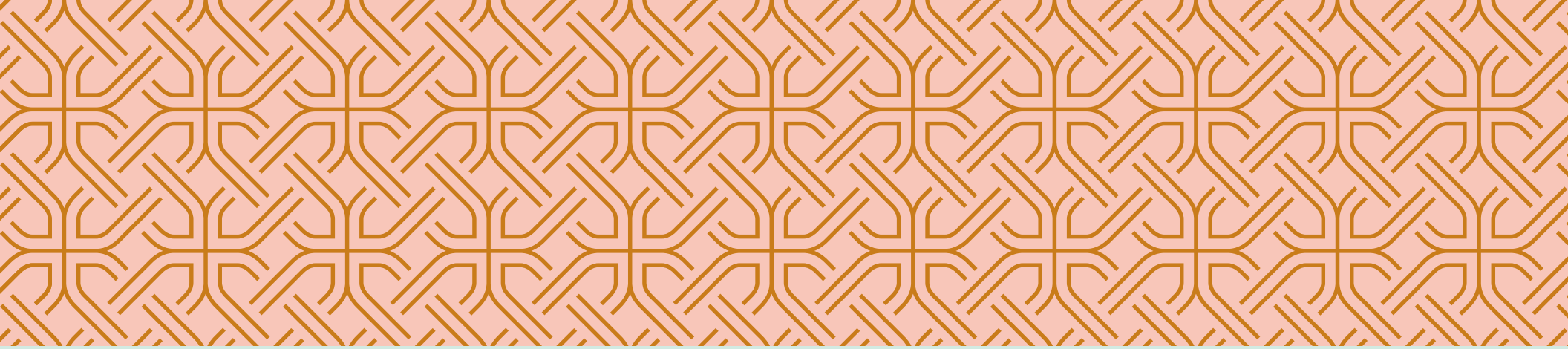
### Choose from the following topics:

- The Surprising Lives of Honey Bees (Most Popular)
- What's Happening to Bees? And How Can You Help
- The Minds of Bees: Insights into How Bees Think
- Bee Watching: The Basics of Bee Identification

**\$500 FOR 1 CLASS**  
IN-PERSON & VIRTUAL  
VERSIONS AVAILABLE







**THANK YOU**  
**FOR SUPPORTING**  
**LOCAL BEEKEEPERS!**



**FENTON**